

HIGH LEVEL PLAN @ 586.650  
SCALE 1:100

NOTES

**INTERNAL WALLS -**  
SINCE INTERNAL WALLS ARE FACEBRICK, ALL WATER, ELECTRICAL AND GAS INSTALLATIONS TO BE DISCUSSED AND AGREED ON SITE PRIOR ERECTION OF WALLS STARTS. NO CHASING IS POSSIBLE AND NO SURFACE MOUNTED SERVICES IS ALLOWED.

**FURNITURE -**  
FOR LOOSE AND FIXED FURNITURE REFER TO FURNITURE SCHEDULE AND JOINERY DRAWINGS.

**SOLAR SHADING**  
VERTICAL OR HORIZONTAL SHADING DEVICES TO BE IMPLEMENTED TO EACH BLOCK INDIVIDUALLY AND AS NECESSARY TO FURTHER DETAILS.

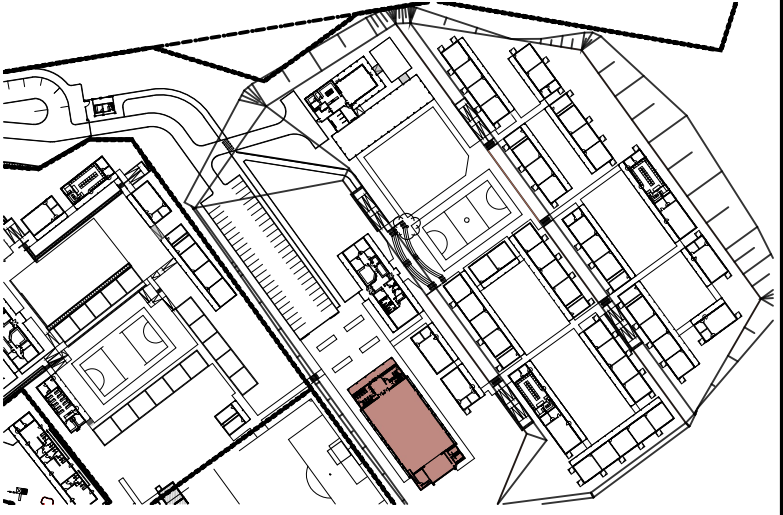
**STORM WATER**  
POSITION OF TANKS AND CONCRETE RAINWATER CHANNEL TO SUIT SITE CONDITIONS AS PER SITE LAYOUTS TO ACCOMMODATE STORMWATER AND OVERFLOW, TO CIVIL ENG'S DESIGN AND DETAIL.

**WINBLOCKS**  
REFER TO ELEVATIONS FOR POSITION OF WINBLOCKS

**TRUSS**  
TRUSS MANUFACTURE TO SUBMIT A WORKSHOP DRAWING FOR APPROVAL

ISSUED FOR  
APPROVAL

KEY



PSP

ARCHITECT



ARCHITECTURAL PROFESSIONAL SACAP NUMBERS:

H.L. MANTEL SACAP 3045

IMPLEMENTED BY

INDEPENDENT  
DEVELOPMENT  
TRUST

| SIGNATURE | DATE | SHEET NO. A1      |
|-----------|------|-------------------|
| DESIGNED  |      | SCALE 1:100       |
| DRAWN     |      | STATUS LISTING    |
| VERIFIED  |      | I = INFORMATION   |
| VALIDATED |      | FA = FOR APPROVAL |
|           |      | T = TENDER        |
|           |      | C = CONSTRUCTION  |
|           |      | AB = AS BUILT     |

CLIENT



IMPLEMENTING AGENT



PROJECT  
DOE PORTFOLIO PROGRAMME  
ESTABLISHMENT OF NEW SCHOOLS  
HILLBROW - SENIOR SECONDARY SCHOOL  
PROVINCE: EASTERN CAPE PROVINCE

DRAWING TITLE  
MULTI-PURPOSE HALL (BLOCK S-Y)  
HIGH LEVEL PLAN

DRAWING DESCRIPTION

--

NOTE  
FOR JOINERY DETAILS REFER TO  
DWG NO: 2204 w07\_01-07/200

| DISC NUMBER | DISCIPLINE | DRAWING NUMBER     | STATUS | REVISION |
|-------------|------------|--------------------|--------|----------|
| 200500293   | ARCH       | 2204<br>w03-07/202 | FA     | AA       |